

# 3219 240 Sherbrooke Street, New Westminster

\$478,000



Welcome to Copperstone in Sapperton! This spacious 1-bedroom, 1-bathroom condo located on the 2nd floor offers an open floor plan that maximizes space and natural light. With a desirable southwest-facing view, enjoy the sunsets from your balcony. Insuite laundry with 1 parking and an oversized locker included. 2 pets, dogs and/or cats are allowed. Located just steps away from vibrant retail shops in the Brewery District, the Royal Columbian Hospital and convenient transit options of bus or Skytrain, this home perfectly balances comfort and convenience. Whether you're a first-time homebuyer, a young professional, looking to downsize, or an investor, this gem is ideal for anyone seeking a modern lifestyle in a prime location.

## KEY INFORMATION

MLS® R2918166

Residential Attached

Sapperton

1 Bedroom

1 Bathroom

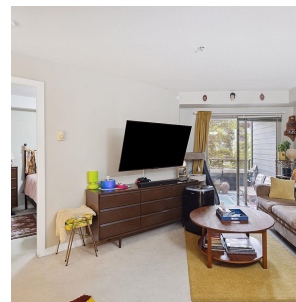
559 SF

\$255.32 Maintenance Fees

## FEATURES

Year Built: 2008

Listed By: RE/MAX Westcoast



rennie