

# 1502 918 Cooperage Way, Vancouver

\$1,199,000



Welcome home to MARINER by Concord Pacific. This spacious 2BED 2BATH & FLEX offers a corner floor plan with city, water & mountain VIEWS! A perfect layout with gourmet kitchen, granite counters, stainless steel appliances, gas stove, extra pantry space & a bright dining area to delight your dinner guests. Air conditioning with nest control, a flex large enough for a home office and a balcony overlooking False Creek round out this GEM. Residents enjoy RESORT amenities at Esprit City Club with 3 levels of recreation and entertainment - 2 gyms, pool, sauna, hot tub, party room, games room, theatre room, bowling and kayaks. Located on the Coopers Park waterfront in the heart of Yaletown, the best dining, entertainment and Seawall living in Vancouver. 1 parking or a quick stroll to Canada Line.

## KEY INFORMATION

MLS® R2918292

Residential Attached

Yaletown

2 Bedrooms

2 Bathrooms

928 SF

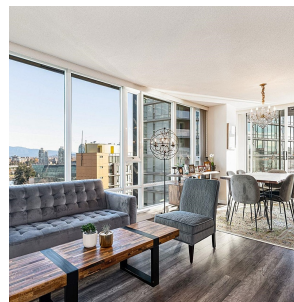
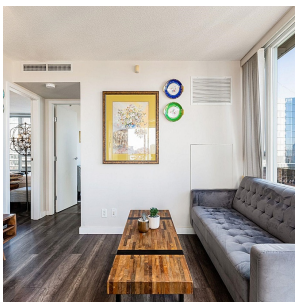
\$683.86 Maintenance Fees

## FEATURES

Year Built: 2008

Views: WATER, MOUNTAINS, CITY

Listed By: rennie & associates realty ltd.



**Salina Kai** PREC\*  
604.773.7013  
skai@rennie.com  
rennie.com/salinakai



**Danny Chow** PREC\*  
604.765.2469  
dchow@rennie.com  
rennie.com/dannychow

**rennie**