

# 213 322 E 15th Avenue, Vancouver

\$1,489,900



E15 Just Off Main — The Final Release. MA+HG architects redefine modern townhome living, rotating homes 45 degrees to unveil a fresh, dynamic form. Studios, 2, and 3-bedroom spaces orbit a shared courtyard, cultivating a vibrant, inclusive community. With Family Units and Garden Studios, it offers opportunities for all. Scott Sueme's art graces the facade, presenting an abstract exploration of colour, form, and environment. Rooftop decks provide breathtaking city and mountain views, while inside, Cristina Oberti's interiors, lofty ceilings, and expansive glazing bathe the space in natural light. Exceptionally priced, steps from Main St., and minutes from downtown, this is more than a home — it's an elevated experience. Move-in ready with just 5% deposit. Open House: Saturday Sept 14, 1-3pm.

## KEY INFORMATION

MLS® R2918720

Residential Attached

Mount Pleasant

3 Bedrooms

3 Bathrooms

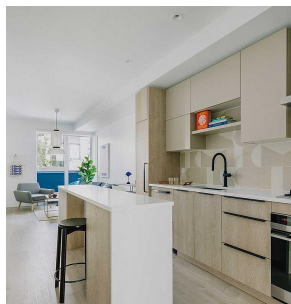
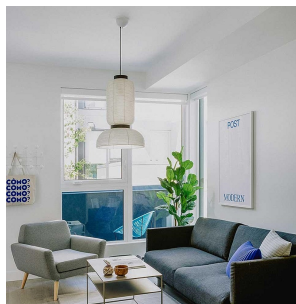
1,155 SF

## FEATURES

Year Built: 2024

Views: Roof deck with city & mountain

Listed By: rennie & associates realty ltd.



**Patrick Campbell**

pcampbell@rennie.com  
rennie.com/patrickcampbell



**Christopher Boyd** PREC\*

604.351.0533  
cboyd@rennie.com  
rennie.com/christopherboyd

**rennie**