

# 36 6116 128 Street, Surrey

\$1,235,000



PRICE REDUCED!! Corner unit, this townhouse looks and feels like a detached home 3 level detached. Has 6 bedroom, 5 full baths, family room, gas fireplace, double garage, alarm system, close to school & bus stop, all measurements are approx., (2 bedroom unauthorized suite - rented). Fantastic Panorama Ridge location with quick access to Hwy 10 & Hwy 99. Close to schools, shopping and transportation. Low strata fess \$385.62 Open House: December 21 & 22 (Sat - Sun) from 1 to 3 pm.

## KEY INFORMATION

MLS® R2918709

Residential Detached

Panorama Ridge

6 Bedrooms

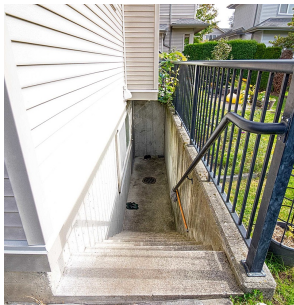
5 Bathrooms

2,681 SF

## FEATURES

Year Built: 2005

Listed By: RE/MAX Bozz Realty



rennie