

# 22 6340 Market Avenue, Tsawwassen

\$899,900



The Granary ~ Everything you love about urban living & everything you crave about the countryside all set in the vibrant Market District of Southlands. Private ground-level entry to your home from the beautifully landscaped garden courtyard. The kitchen has Fisher & Paykel appliances & quartz countertops where farm fresh ingredients get transformed into gourmet meals. This home has an east facing balcony overlooking the courtyard and a west facing Juliette balcony. L'aromas, farmers markets, Four Winds Restaurant & Craft Brewery are right at your doorstep. Set amongst over 400 acres of farm fields & natural parkland with beautiful Centennial Beach just a short walk away. Truly authentic Southlands living. Please contact us to schedule your private appointment!

## KEY INFORMATION

MLS® R2919122

Residential Attached

Boundary Beach

2 Bedrooms

3 Bathrooms

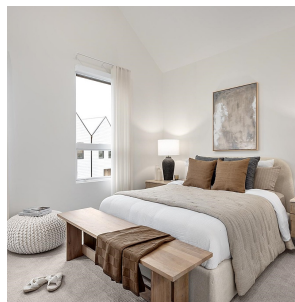
1,333 SF

## FEATURES

Year Built: 2024

Views: Courtyard

Listed By: Centric Realty Ltd.



rennie