

# 1011 Burnside Rd W, Saanich

\$765,000



BACK AVAILABLE - \*Prime Development Opportunity – BUILD NEW - Bring your Building Plans - Duplex or MultiFamily\* Seize this rare chance to reimagine a 10,977 sq. ft. property in sought-after Strawberry Vale. With ample space & prime central location, it offers excellent potential to build a duplex or multi family home providing strong redevelopment options. Nestled among beautiful trees, the current 3-bed home is set back from the road, offering privacy, a park-like yard, & southern exposure with glimpses of Portage Inlet waterway. This property is steps from schools, the Galloping Goose Trail, and shopping, & just minutes from downtown Victoria. Don't miss this exceptional opportunity— Schedule your showing today! (id:56120)

## KEY INFORMATION

MLS® 974627

Residential Detached

Strawberry Vale

3 Bedrooms

2 Bathrooms

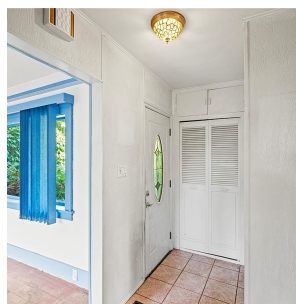
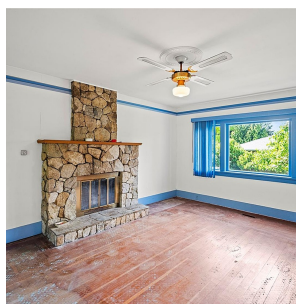
1,964 SF

10,977 SF Lot

## FEATURES

Year Built: 1923

Listed By: Pemberton Holmes Ltd.



rennie