

10356 Skagit Drive, Delta

\$1,479,000



TURN KEY- AIR CONDITIONED family home situated on 8,902 sqft view lot in the highly sought-after Sunbury Park neighborhood. Three spacious bedrooms on the main floor, 3 full bathrooms, features a recreation space downstairs, perfect for gatherings & entertainment, with loads of floor to ceiling storage & SUITE POTENTIAL. Stunning sunsets & mountain views. The open floor plan enhances the sense of space & light, complemented by a STUNNING KITCHEN HARD WOOD FLOORING, & stylish lighting throughout. A lrg landscaped backyard with a private covered deck for a serene outdoor space for relaxation & play. Includes a paved concrete driveway, carport, garage. EV CHARGER. Conveniently located within the Sands Sec & Brooke Elem & close to Sunbury Park & Burns Bog.

KEY INFORMATION

MLS® R2919465

Residential Detached

Nordel

3 Bedrooms

3 Bathrooms

1,900 SF

8,902 SF Lot

FEATURES

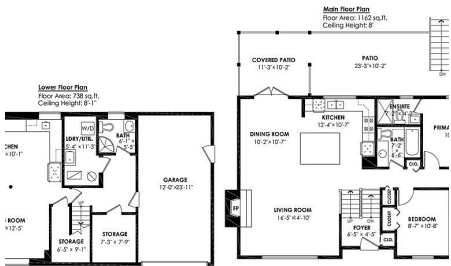
Year Built: 1973

Views: Bridge, Mountain, Sunsets, River

Listed By: RE/MAX Performance Realty

10356 Skagit Drive, North

Lower Floor: 738 sq. ft. Porch:
Main Floor: 1,162 sq. ft. Storage
Total Livable: 1,900 sq. ft. Total Ex.
Garage: 311 sq. ft.
Grand Total: 2,211 sq. ft.



rennie