

# 2206 520 Como Lake Avenue, Coquitlam

\$599,000



Discover this quiet spacious 1-bdrm at Crown by renowned builder Beedie. Exceptional floorplan, it features a modern kitchen w high-end appliances/ gas cooktop/quartz countertops. Open living/ dining area is flooded w natural light, seamlessly connecting to balcony w gorgeous mountain/city views, full size washer/dryer. Refresh paint throughout. Located in dynamic and rapidly evolving Lougheed/Burquitlam, it offers unparalleled convenience. Just 1-minute walk to SkyTrain, you'll enjoy easy access to city without the noise of the trains (not facing skytrain). Close to new Lougheed Mall, SFU, and Hwy 1. The Crown offers an array of amenities, including gym/ party rm/activity rm/kid's rm/guest suite/ outdoor garden. 1 parking/1 locker. A prime location for life and work. Open: Sun Nov. 17, 2-4pm

## KEY INFORMATION

MLS® R2920698

Residential Attached

Coquitlam West

1 Bedroom

1 Bathroom

587 SF

\$326.99 Maintenance Fees

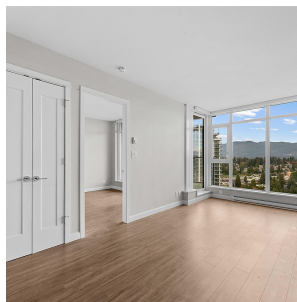
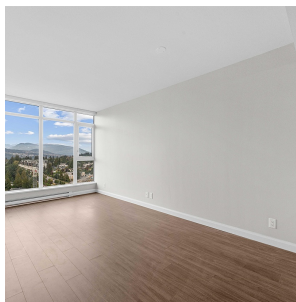
## FEATURES

Year Built: 2017

Views: MOUNTAIN/CITY

Listed By: rennie & associates realty ltd.

## AL STAGING



**Calvin Jiang**  
604.961.1698  
cjiang@rennie.com  
rennie.com/calvinjiang

**rennie**