

904 9288 University Crescent, Burnaby

\$699,900



Welcome to NOVO I, by highly reputable INTERGULF - one of the most sought after developments in SFU/UniverCity! This rare 2 bed + 2 bath PENTHOUSE LEVEL corner home boasts magnificent views from every room from the mountains, to the city, to the water & comes appointed w/ a bright & spacious 1054sf layout, 212sf wrap around balcony, laminate HW floors, granite counters, S/S appliances, ample cabinet space + 2 rare side-by-side parking stalls (not tandem)! Well maintained & recently repainted building w/ a very large CRF (over \$1.8m), gym, party rm & so much more! Conveniently located just steps to SFU, grocers, restaurants, parks, trails & University Highlands Elementary. This one ticks all the boxes as an excellent investment property or home to live in! OVER \$100K UNDER ASSESSMENT VALUE!

KEY INFORMATION

MLS® R2921265

Residential Attached

Simon Fraser University

2 Bedrooms

2 Bathrooms

1,054 SF

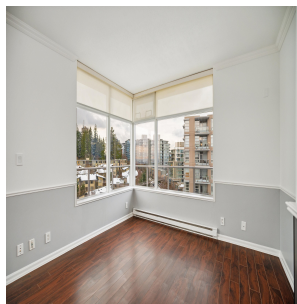
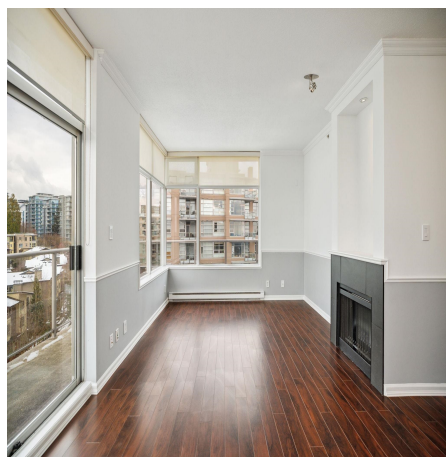
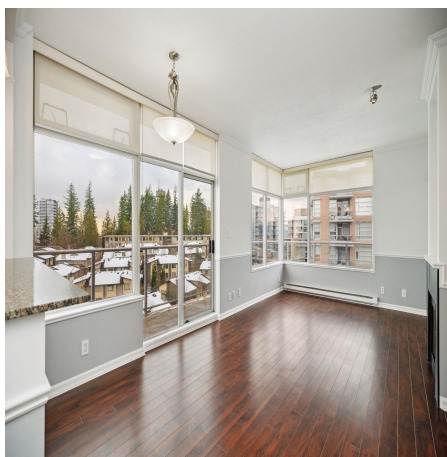
\$562.95 Maintenance Fees

FEATURES

Year Built: 2004

Views: City, Mountains and Water

Listed By: rennie & associates realty ltd.



Ryan Wong PREC*
604.551.7966
rwong@rennie.com
rennie.com/ryanwong

rennie