

# 1206 1182 Westwood Street, Coquitlam

\$899,900



SOPHORA AT THE PARK by POLYGON, The only one newly building with AIR CONDITION in Coquitlam Center Area ! This great southwest facing unit features 861 sq ft indoor living spaces plus 2 balconies. Bright South-facing Living and Dining area with unobstructed view. Modern kitchen with Bosch appliances and Centre Island. EV Parking ready to use. Walk to Coffee shops, Restaurants, Library, Parks, Shopping mall and Skytrain. G..O..N..E!!!

## KEY INFORMATION

MLS® R2921069

Residential Attached

North Coquitlam

2 Bedrooms

2 Bathrooms

861 SF

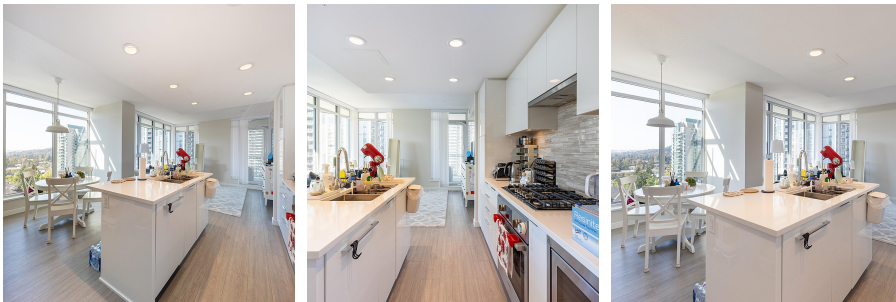
\$344.54 Maintenance Fees

## FEATURES

Year Built: 2023

Views: city

Listed By: Interlink Realty



rennie