

3200 Clam Bay Rd, Pender Island

\$19,800,000



Presenting the offering of an architecturally significant home in the Gulf Island - the Point House, by notable West Coast Modern architects Bo Helliwell and Kim Smith of Blue Sky Architecture. The exquisite waterfront home is situated on a 104.8 acre estate on North Pender Island that overlooks Navy Channel and faces the sun-illuminated mountains of Mayne Island. The property includes a sustainable organic farm, the shoreline of Davidson Bay, 50 foot dock, an idyllic pond, and acres of untouched old-growth forest. Characteristically west coast with its Douglas Fir exposed structure, the house differs from the norm through a masterful use of curved lines. The undulating roof mirrors the gentle curves of the island's landforms, while curved backbone of the home follows curve of the point. The Point House is effortlessly accessed by boat, float plane, or ferry from Vancouver. An ideal corporate retreat or family legacy property. (id:56120)

KEY INFORMATION

MLS® 975110

Residential Detached

Pender Island

5 Bedrooms

0 Bathrooms

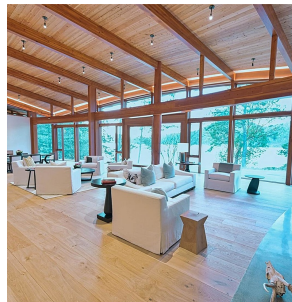
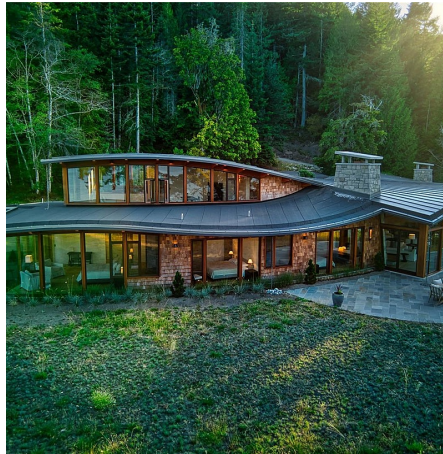
9,146 SF

4,565,096 SF Lot

FEATURES

Year Built: 2022

Listed By: Sotheby's International Realty Canada



rennie