

168 Clovermeadow Crescent, Langley

\$1,749,900



Private & peaceful country setting on nearly an acre! Lovingly maintained rancher w/newer contemporary kitchen & stainless steel appliances including gas stove. Living room w/gas fireplace plus a spacious family room. Updates include some triple pane windows & electric heat pump. Wired for back-up power generator. Huge composite sundeck overlooking serene backyard w/gas BBQ hookup & hot tub - perfect for entertaining. Car buffs will enjoy detached 30' X 25' shop complete w/220 power, 10,000lb two post hoist and 60 gallon compressor. Fully automated climate controlled greenhouse for your green thumb. Fabulous & highly desirable, quiet location - short walk to DW Poppy HS & Pederson Road school bus picks up right out front, easy access to Kelly Lake Trails, Langley City & freeway access.

KEY INFORMATION

MLS® R2921583

Residential Detached

Salmon River

3 Bedrooms

2 Bathrooms

1,542 SF

40,075 SF Lot

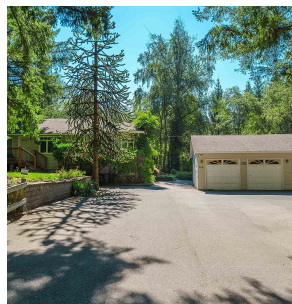
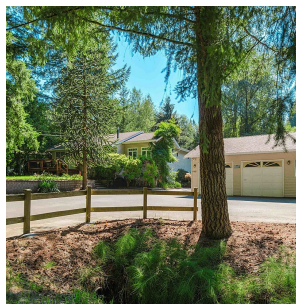
FEATURES

Year Built: 1962

Listed By: Royal LePage - Wolstencroft

168 Clovermeadow Crescent,
Langley

Main Floor: 1,542 sq. ft. Porch: 603 sq. ft.
Total (incl): 2,145 sq. ft. Mech. Room: 238 sq. ft.
Garage: 702 sq. ft. Total Excl: 1,540 sq. ft.
Grand Total: 2,373 sq. ft.



rennie