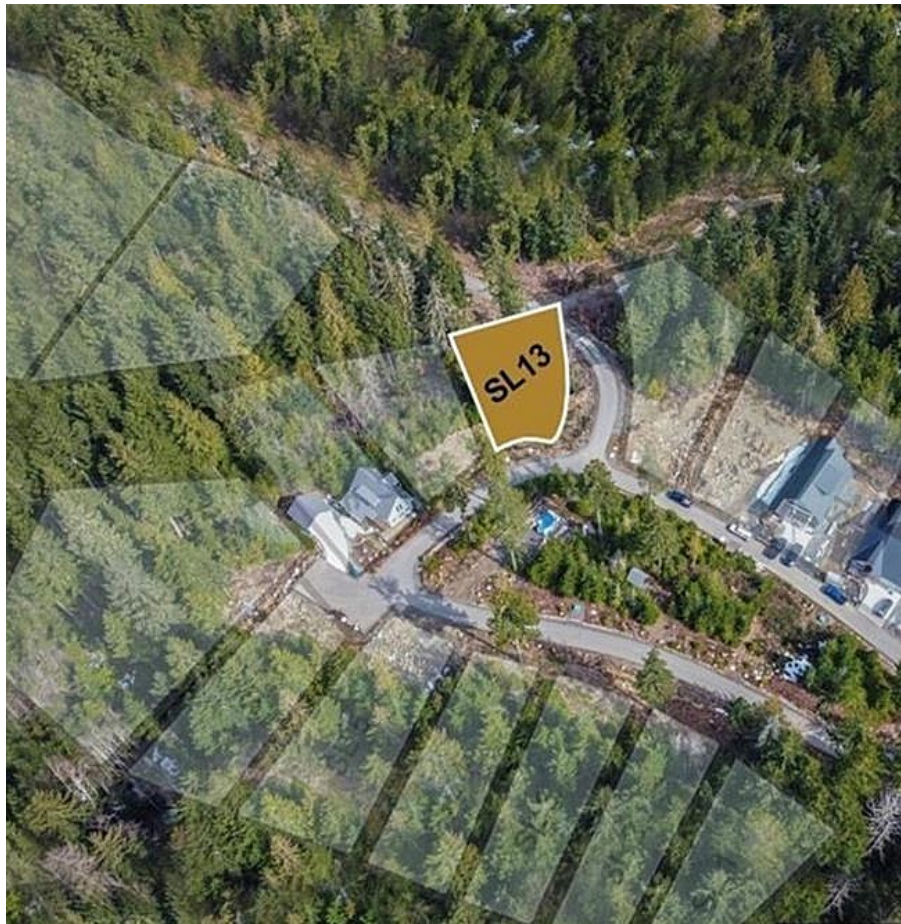


13 Trailhead Cir, Shawnigan Lake

\$199,999



ATTENTION BUILDERS - Great opportunity to build on this shovel ready lot. Great upside potential at the current price! This **FULLY** serviced lot is located in the heart of the Malahat area, a location perfect for the nature enthusiast surrounded by multiple hiking trails and only a few minutes to Wrigglesworth Lake. Only 40 minutes or less to get to all amenities in downtown Victoria or 15 minutes to Mill Bay town centre and ocean access. Excavation is complete, with new rock retaining wall in place. Surveying and Geotech also completed. Ready to build, flat lot with house plans approved. Don't miss out on your chance to live in this beautiful hillside community. Building Plans available. (id:56120)

KEY INFORMATION

MLS® 975120

Land Only

Malahat Proper

0 Bedrooms

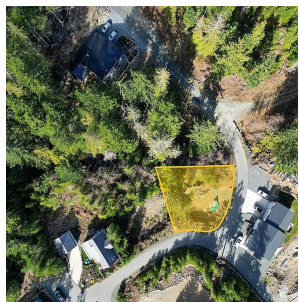
0 Bathrooms

0 SF

9,301 SF Lot

FEATURES

Listed By: RE/MAX Camosun



rennie