

807 8725 University Crescent, Burnaby

\$649,000



Situated in the heart of SFU UniverCity, this contemporary-style building offers an exceptional connection to contemporary West Coast living. Just One block from shopping ,restaurants and services at SFU.The efficient layout of this 732 sq ft suite prioritizes kitchen and living areas while maintaining practical bedroom sizes and ample storage. Interior finishes balance modern styling with a comfortable feel. Flat-panel, porcelain tiles are sleek while natural wood floors provide a sense of texture and warmth. Efficient plumbing fixtures, a heat-recovering ventilation system and well-insulated walls reduce water & space heating charges. Energy Star appliances and LED lights contribute to lower monthly electrical bills. One locker and one parking included. Worthy investment!

KEY INFORMATION

MLS® R2922129

Residential Attached

Simon Fraser University

2 Bedrooms

1 Bathroom

732 SF

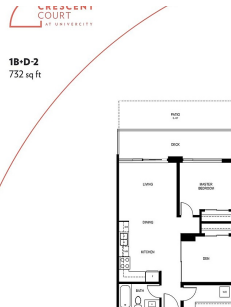
\$389.71 Maintenance Fees

FEATURES

Year Built: 2022

Views: Mountain & city

Listed By: Homeland Realty



rennie