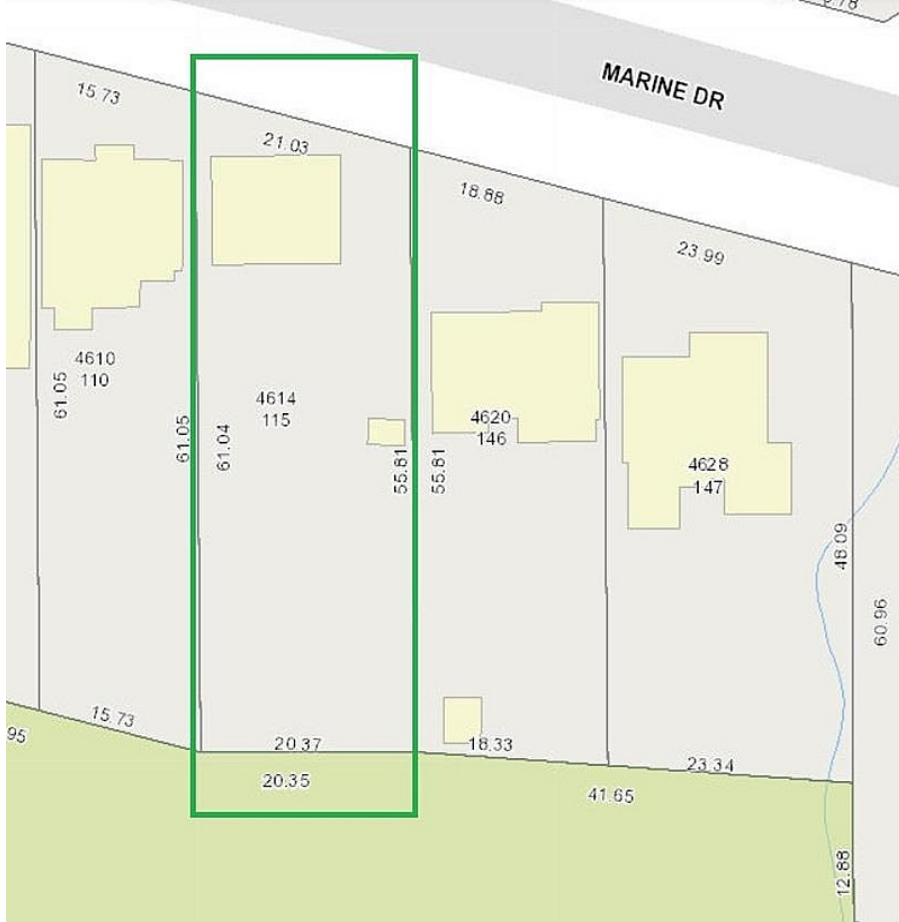


4614 Marine Drive, Burnaby

\$1,798,800



Rare Opportunity - R1 Zoned Multi-Unit Housing in a highly desirable neighborhood. This property offers 66' frontage and 192' depth (12,782 sqft) with plenty of potential to BUILD, HOLD, or INVEST. Rarely Available. Thanks to the size of the lot, and new "HOUSING CHOICES PROGRAM" of the City of Burnaby, Multiple Possibilities. Build your dream home, or build a multi-unit property. Main floor has 2 bedrooms & 2 bathrooms, Basement Suite has 2 bedrooms & 1 bathroom. Walking distance to transit, shopping, schools, recreation and parks. Minutes to Metrotown, T&T, golf, Skytrain and highways.

KEY INFORMATION

MLS® R2922485

Residential Detached

Big Bend

4 Bedrooms

3 Bathrooms

2,128 SF

12,782 SF Lot

FEATURES

Year Built: 1951

Listed By: RE/MAX Performance Realty

