

54 6245 Sheridan Road, Richmond

\$1,199,800



MAPLE TREE LANE - 3 bdrm, 1.5 bath, FULLY DETACHED TOWNHOME perfect for a growing family. Laminate flooring (tiled kitchen) throughout both levels. Bright and sunny updated kitchen with white stone counters, dark cabinets, and new (2022) stainless appliances. Traditional floor plan has cozy family room with separate living room with wood burning fireplace. Good sized bedrooms incl primary with balcony. Spacious and fully fenced east facing backyard with grassy area and deck. Updated washer/dryer (2022) and h/w tank (2020). NEW ROOF 2022. Single car garage & driveway parking. Updated windows. Errington Elementary & Steveston/London school catchment. A fabulous place to call home. OPEN HOUSE: Saturday, Oct 12th, 2-4pm.

KEY INFORMATION

MLS® R2922843

Residential Detached

Woodwards

3 Bedrooms

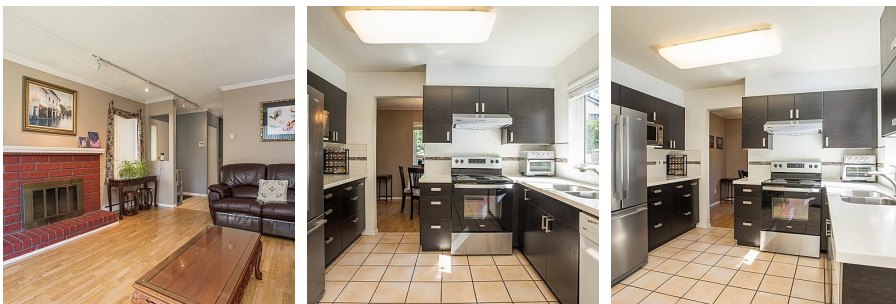
2 Bathrooms

1,604 SF

FEATURES

Year Built: 1978

Listed By: RE/MAX Westcoast



rennie