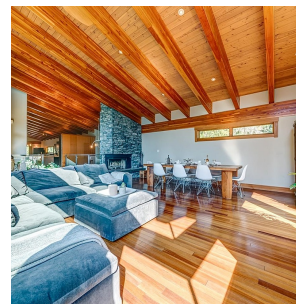


9557 Emerald Drive, Whistler

\$3,799,000



Boasting a secluded setting in Emerald Estates, 9557 Emerald Drive is a striking West Coast contemporary retreat where architectural elegance meets the tranquility of nature. Designed by Wexler, this 4.5 bed/4 bath home blends rich wood, stone, and Japanese hardwood floors, creating a refined yet inviting atmosphere. The expansive great room, with exposed beams and a wood-burning fireplace, frames Whistler forest & mountain views, offering the perfect setting for relaxation. The gourmet kitchen opens to sun-drenched decks, ideal for alfresco dining & entertaining. With a private hot tub, two-car garage, abundant storage, and a versatile suite, this home provides a peaceful escape nestled against the untouched wilderness of Rainbow Mountain, offering both privacy & luxury in equal measure.

KEY INFORMATION

MLS® R2923238

Residential Detached

Emerald Estates

4 Bedrooms

4 Bathrooms

3,358 SF

11,732 SF Lot

FEATURES

Year Built: 2009

Listed By: Angell Hasman & Associates Realty Ltd.

rennie