

1200 Douglas Crescent, Richmond

\$1,399,000



Discover the perfect blend of modern elegance & family comfort in this fully renovated Burkeville gem. Nestled in a tranquil, community-focused neighborhood, this 3-bedroom plus den, 2-bathroom residence features a detached office ideal for remote work or as a creative studio.

Thoughtfully updated with stainless steel appliances, durable vinyl flooring, stylish lighting, fresh paint, & plush carpeting, the home exudes contemporary charm. The bright, private backyard sanctuary seamlessly extends the living space, offering a serene retreat for relaxation, gardening, or outdoor dining. Conveniently close to parks, daycare, Montessori schools, all of your daily lifestyle & shopping needs, & just minutes from Vancouver.

KEY INFORMATION

MLS® R2923663

Residential Detached

Sea Island

3 Bedrooms

2 Bathrooms

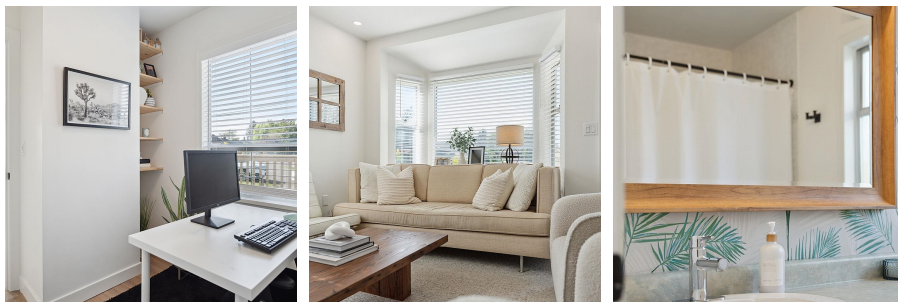
1,493 SF

5,208 SF Lot

FEATURES

Year Built: 9999

Listed By: rennie & associates realty ltd.



Nagib Karim PREC*
604.999.5887
nkarim@rennie.com
rennie.com/nagibkarim

rennie