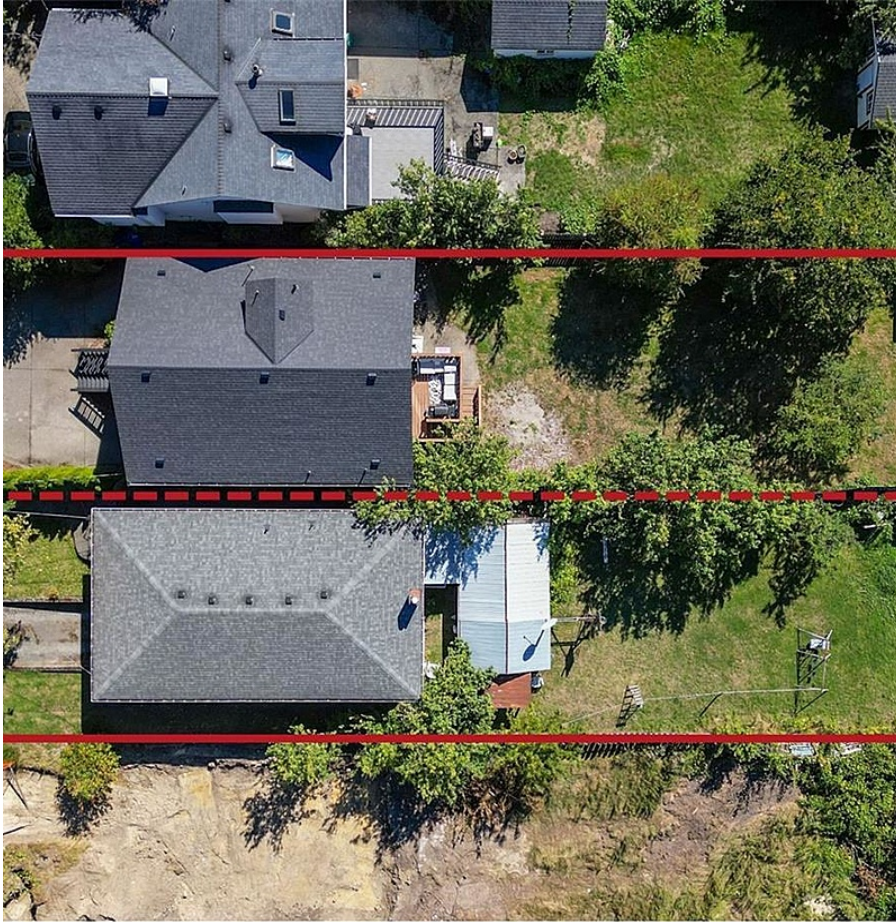


# 2844 Shelbourne St, Victoria

\$1,550,000



Attention Developers: This is an exceptional opportunity to acquire two adjacent lots totaling 0.30 acres at 2844 and 2840 Shelbourne St (MLS-), offering a combined area of 80ft x 165ft (13,200 sqft) with substantial redevelopment potential. These properties must be purchased together and are ideal for generating rental income while you plan your future project. Additionally, consider the neighboring lots at 2848/2852 Shelbourne (MLS#964573), which could expand the site to 160ft x 165ft (26,400sqft). Victoria's proactive approach to development enhances the appeal of this investment. Please note that both homes are currently occupied; do not walk the properties. Site visits can be arranged with your agent, and home viewings are only available with an accepted offer. Don't miss out—contact your agent today! (id:56120)

## KEY INFORMATION

MLS® 975305

Residential Detached

Oaklands

7 Bedrooms

2 Bathrooms

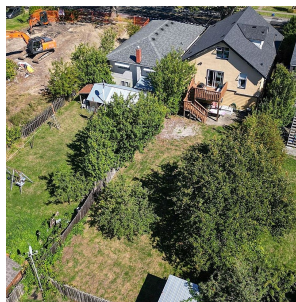
1,762 SF

6,600 SF Lot

## FEATURES

Year Built: 1963

Listed By: RE/MAX Camosun



rennie