

414 7488 Byrnepark Walk, Burnaby

\$699,999



Welcome to GREEN, proudly built by Adera and located in a quiet neighborhood. Taylor Park Elementary, a long standing top school in Burnaby, is just across the street. Great central location, with 10-minute walk to Edmonds Skytrain and grocery stores, 3-minute drive to Market Crossing and Highgate shopping area, and 7-minute drive to Metrotown. This southeast facing 2-bedroom, 2-bathroom unit provides tons of natural lights and sunshine, with a view of the beautiful garden. Modernized open concept offers decent-sized dining area and living room, with no space wasted. Surrounded by Byrne Creek park and Taylor park - plenty of trails and green space for exercise, fun time and your pets! 1 parking and 1 storage locker. Don't miss!

KEY INFORMATION

MLS® R2923665

Residential Attached

South Slope

2 Bedrooms

2 Bathrooms

758 SF

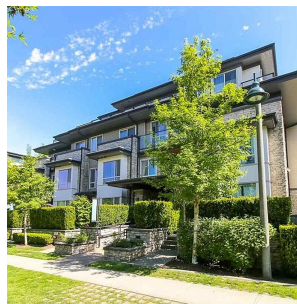
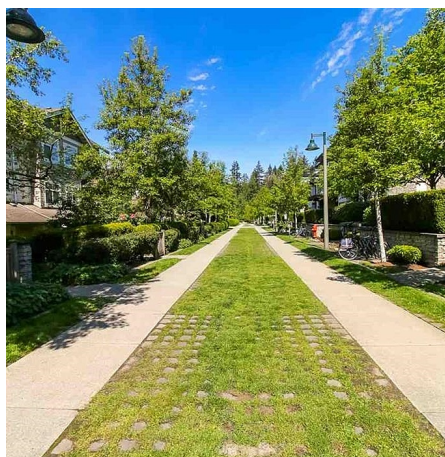
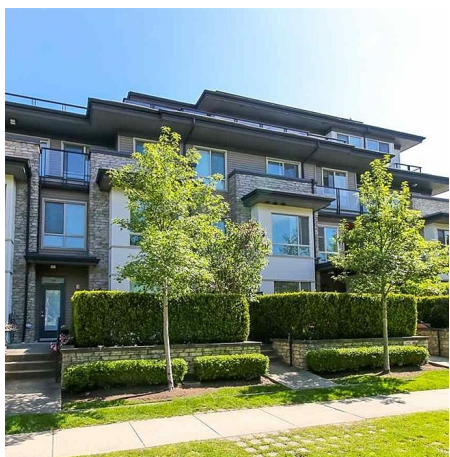
\$375.80 Maintenance Fees

FEATURES

Year Built: 2009

Views: COURTYARD

Listed By: Nu Stream Realty Inc.



rennie