

108 290 Francis Way, New Westminster

\$628,800



Welcome to The Grove! Tucked away in Onni's prestigious Victoria Hill community off McBride Blvd & Royal Ave. Beautiful ground level unit boasting 832 sq.ft. of living space with 165 sq.ft. of covered patio access from the living & Master. Kitchen offers ample counter & cabinet space with stone counters, S/S appliances & breakfast bar that opens to the dining & living. High quality laminate flooring through out the unit. Primary bedroom can easily accommodate a king size bed with walk-thru closet connecting to the bathroom and versatile Office/Den can be used for a bedroom or nursery. Fantastic amenities include gym, study area, theatre, party room, & basketball court. Short walk to Queens Park, Canada Games Pool & all of New West's amenities!

KEY INFORMATION

MLS® R2923526

Residential Attached

Fraserview

1 Bedroom

1 Bathroom

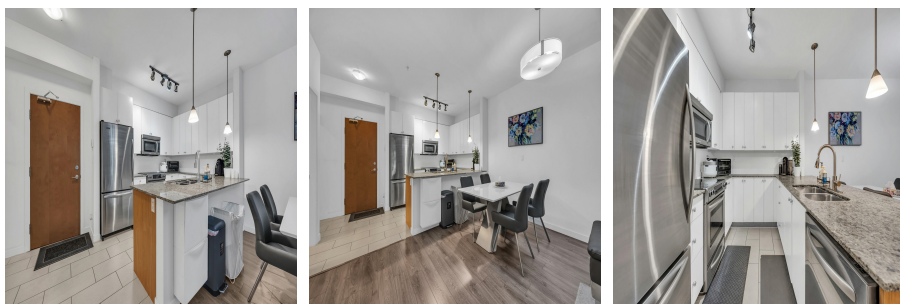
832 SF

\$535.55 Maintenance Fees

FEATURES

Year Built: 2008

Listed By: RE/MAX City Realty



rennie