

454 Newport Ave, Oak Bay

\$2,800,000



South Oak Bay at its finest. Situated in one of Oak Bay's most desirable neighbourhoods, this exceptional 1913 residence embodies the elegance of the West Coast. Meticulously updated and well-maintained, this home rests on a high property spanning .67 acres, adjacent to Anderson Hill Park. From here, enjoy breathtaking views of the Victoria Golf Club, the ocean, and the majestic mountains beyond. As you enter, you will be impressed with the timeless design of the living space created by a well-known architect Pamela Charlesworth. The large principal rooms retain the 10' ceilings of the era. The kitchen, complete with an inviting eating area, offers direct access to the back garden with deck and a picturesque walkway leading to Anderson Hill Park. Upstairs, there are four bedrooms, including a peaceful primary bedroom with its own elegant ensuite. The third-level recreational room/office space, boasts awe-inspiring views as a private retreat. Well located to all Oak Bay offers with miles of shoreline, the marina, and the Oak Bay Village with its vibrant shops, cafes, galleries, and restaurants nearby. (id:56120)



KEY INFORMATION

MLS® 975550

Residential Detached

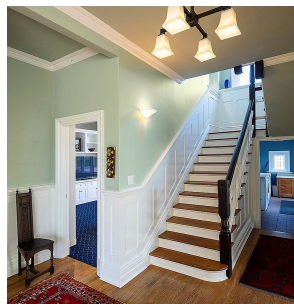
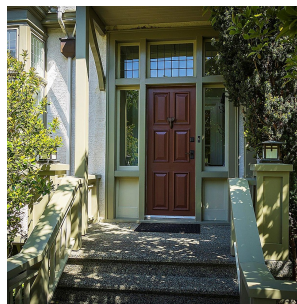
South Oak Bay

4 Bedrooms

4 Bathrooms

5,901 SF

29,185 SF Lot



FEATURES

Year Built: 1913

Listed By: Newport Realty Ltd.

rennie