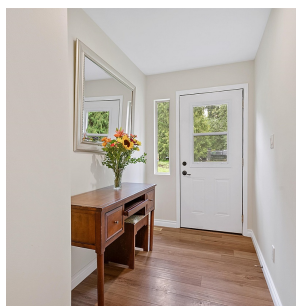


11932 Dewdney Trunk Road, Mission

\$1,399,900



Endless Possibilities in a dream location, Discover this beautifully updated rancher on a spacious .7 acre lot. With a modern kitchen, updated bathrooms, and a bright, open layout, this home offers comfort and style. The private backyard oasis features a deck, creek, fire pit, vegetable garden, and a 24x36 shop—perfect for a variety of uses. Bonus Opportunity: The property's CH1 zoning provides approximately 900 sq. ft. of flexible space, perfect for a business, store, or art studio. This space comes with its own furnace, separate access, and ample parking, making it a prime location for your entrepreneurial dreams, commercial space currently running as a Tea Lounge and Wellness centre, formerly Steelhead Store, this area is ready for your next big idea! On city water.

KEY INFORMATION

MLS® R2924010

Residential Detached

Steelhead

2 Bedrooms

3 Bathrooms

2,334 SF

32,932 SF Lot

FEATURES

Year Built: 1998

Listed By: eXp Realty

rennie