

215 400 Dupplin Rd, Saanich

\$559,900



Get ready to fall in love with this stunning corner unit condo, where natural light pours in through expansive windows, creating a bright and airy vibe throughout. The open-concept living area is perfect for both entertaining and everyday relaxation, with seamless flow between the kitchen, dining, and living spaces. Whether you're hosting a dinner party or just enjoying a quiet night in, the living area's spacious layout and abundant sunshine create the perfect backdrop. Your primary bedroom is a peaceful retreat with an ensuite bathroom featuring elegant finishes. The second bedroom is ideal for guests or a home office. With beautiful floors, a gas fireplace, upgraded appliances, and plenty of storage throughout, this condo offers both style and function. Located just minutes from restaurants, shops, parks, and public transportation this sun-soaked condo is the perfect place to call home! (id:56120)

KEY INFORMATION

MLS® 975762

Residential Attached

Rudd Park

2 Bedrooms

2 Bathrooms

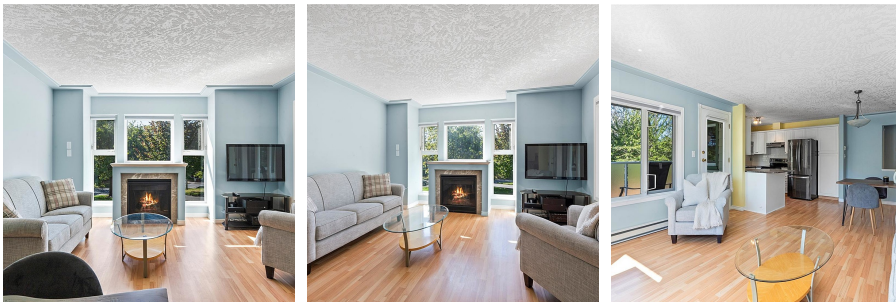
1,031 SF

1,244 SF Lot

FEATURES

Year Built: 1995

Listed By: RE/MAX Island Properties



rennie