

# 2 2816 Shelbourne St, Victoria

\$1,079,000

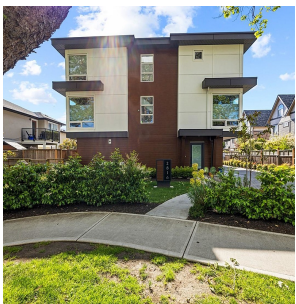


Layout, Location & Lifestyle! There is something for everyone at #2-2816 Shelbourne St. This property has such a versatile layout & accommodates many different lifestyles including, teens, students, multi-generational living & easy work from home spaces! With 3-4 bedrooms (one without closet) den/office, multiple living spaces, and 3 bathrooms, it's perfect for comfortable living and entertaining. Complemented by abundant natural light that fills the rooms. The main floor features a sleek kitchen w/stainless steel appliances, gas range, large island and plenty of custom cabinetry. Enjoy cozy evenings by the fireplace in the living room, adjacent to a dining area. Retreat upstairs to the primary suite featuring a luxurious 3-piece ensuite w/glass shower. Two more bedrooms & a spa-like bathroom + laundry complete this level. The lower floor offers added flexibility with another bedroom/office, garage + access outside, where can unwind in the privacy of the fenced-in patio. Amazing Value! Call your realtor today or come by one of our Open Houses! (id:56120)



## KEY INFORMATION

MLS® 975455  
Residential Attached  
Oaklands  
4 Bedrooms  
3 Bathrooms  
2,000 SF  
2,000 SF Lot



## FEATURES

Year Built: 2020  
Listed By: eXp Realty

rennie