

# 112 12148 224 Street, Maple Ridge

\$599,900



JOIN YOUR PEERS at the E.C.R.A. building by Panorama. This 1350 s.f. 2 bedroom plus den and 2 full bathroom unit is one of the biggest in the building. Being a North-West corner unit, you will enjoy the natural light and additional windows, as well as an oversized private sundeck; additionally, the suite remains cool and pleasant during the summer. Newer flooring and freshly painted, this inviting unit will be the envy of all who visit. The building has been designed for those 55 and better, and the Ridge Meadows Seniors Society is conveniently located in the complex offering a range of social and fitness activities including yoga, dance, billiards room, craft/art room, workshop, coffee bar and lunch area. Ideal for those looking to downsize, and an ideal place for retirees, snowbirds etc.

## KEY INFORMATION

MLS® R2924374

Residential Attached

East Central Maple Ridge

2 Bedrooms

2 Bathrooms

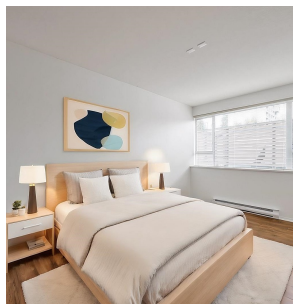
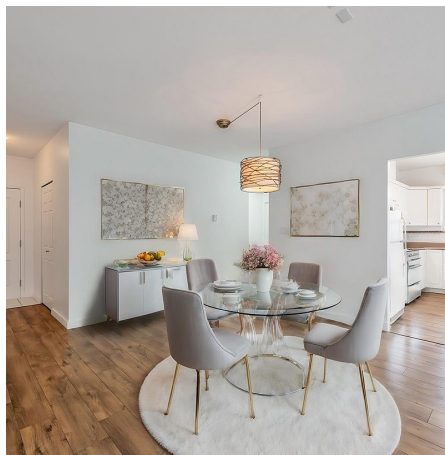
1,350 SF

\$530.54 Maintenance Fees

## FEATURES

Year Built: 1999

Listed By: Royal LePage Elite West



rennie