

309 48 Richmond Street, New Westminster

\$585,000



****LARGE TOP FLOOR 1-Bedroom Condo with View**** Discover this SPACIOUS beautifully maintained one-bedroom condo offering VIEWS of the Fraser River & mountains. The expansive kitchen features ample counter space, newer appliances, double sink & beautiful quartz countertops (matching quartz in bathroom too!) The primary bedroom is generously sized, easily accommodating a king-size bed, and boasts extensive closet space with custom organizers, including convenient pull-outs. Additional perks include a LARGE storage locker, covered/gated boat & RV parking and a guest suite for visitors. Located just steps away from Sapperton Landing Park & Skytrain at the Brewery District, This is a gem you don't want to miss!

KEY INFORMATION

MLS® R2924856

Residential Attached

Fraserview

1 Bedroom

1 Bathroom

868 SF

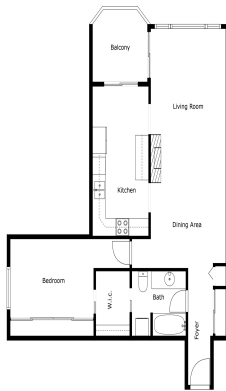
\$441.40 Maintenance Fees

FEATURES

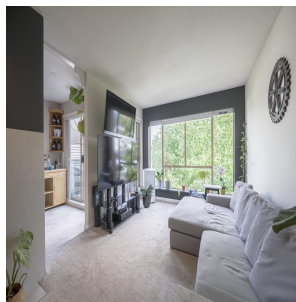
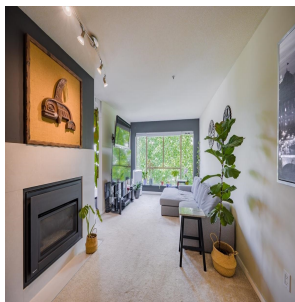
Year Built: 1992

Views: MOUNTAINS AND RIVER

Listed By: Sutton Group Seafair Realty



Floor Plan Created by Cuboxo App. Measurements Deemed Highly Reliable but Not Guaranteed.



rennie