

1308 5685 Halley Avenue, Burnaby

\$656,000



Building boutique residences for over 20 years, Qualex-Landmark's Artesia features over 17,000 SF of amenities and is located on a quiet tree-lined street, just steps to the Patterson Skytrain and Metrotown mall. This spacious one bedroom residence is the perfect blend of functionality, comfort, and modern aesthetics. EV ready parking & storage included. Photos are representative.

KEY INFORMATION

MLS® R2925257

Residential Attached

Central Park

1 Bedroom

1 Bathroom

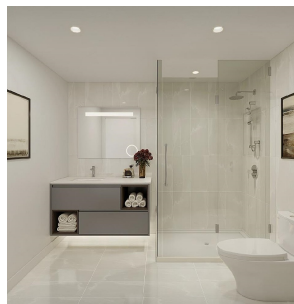
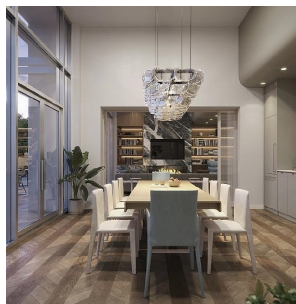
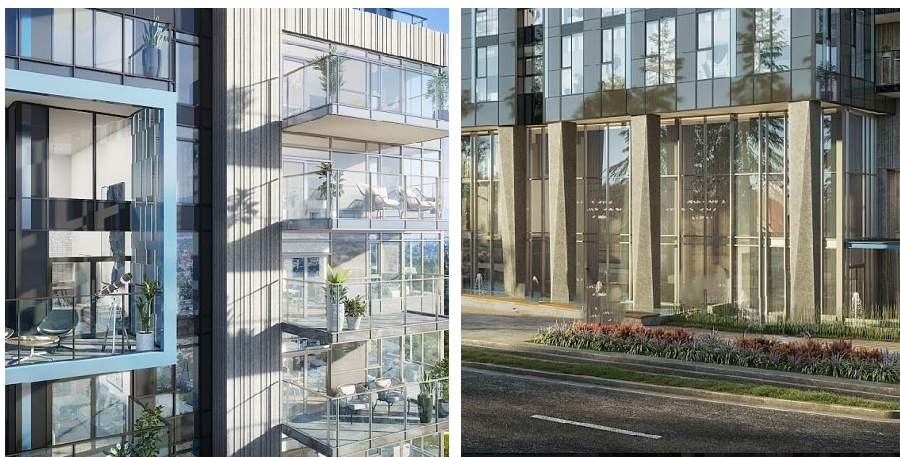
583 SF

\$270.00 Maintenance Fees

FEATURES

Year Built: 2025

Listed By: Bode Platform Inc.



rennie