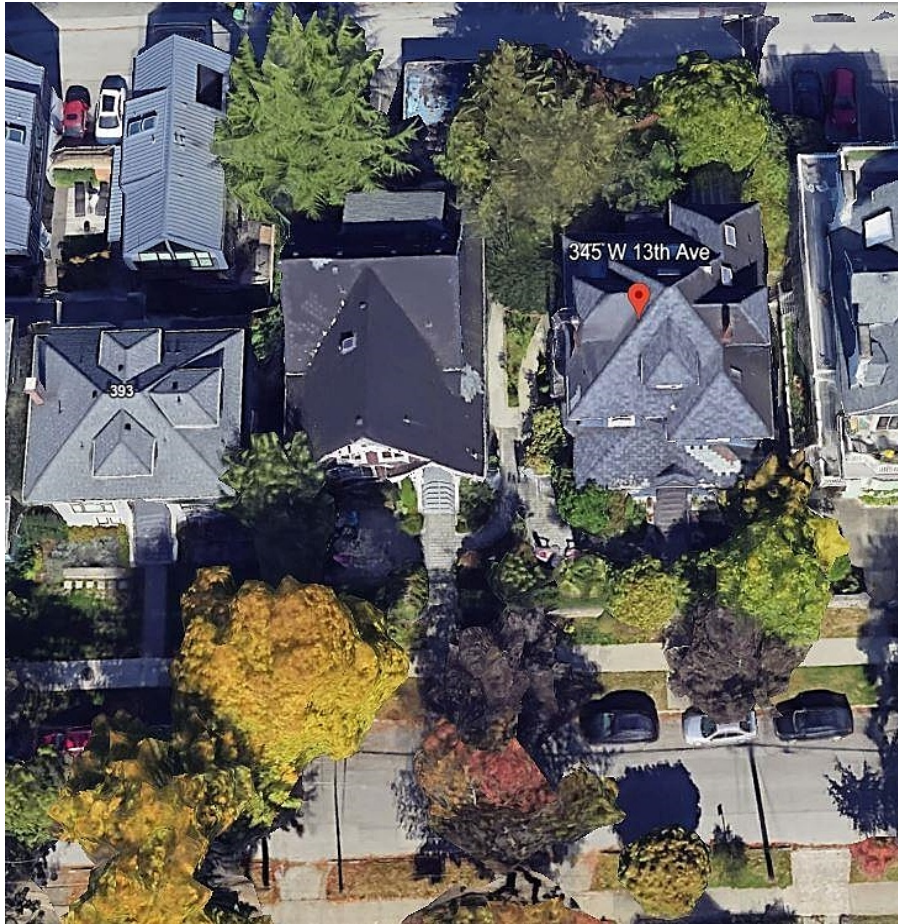


# 345 W 13th Avenue, Vancouver

\$6,500,000



This is a development site containing two lots currently listed with this brokerage - 345 and 387 West 13th Avenue. Total site size: 100 ft front x 125 ft depth. These lots are in the Broadway-City Hall SkyTrain Station area, with various development options. Check out the City's Broadway Plan and TOA Rezoning Policy, or call to discuss or if you have questions.

## KEY INFORMATION

MLS® R2925273

Residential Detached

Mount Pleasant

0 Bedrooms

0 Bathrooms

5,366 SF

6,250 SF Lot

## FEATURES

Year Built: 1912

Listed By: Multiple Realty Ltd.

**rennie**