

6507 Waltham Avenue, Burnaby

\$2,950,000



Custom-built by the famous architect Paul Levitt, a modern, contemporary home located on a quiet street, just mins from Metrotown, schools & SkyTrain. Features 4 spacious beds, 4 baths, modern finishes, hardwood floors, 9' ceilings, amazing tile work, Sub Zero fridge, Gaggenau coffee maker & convection oven, Wolf stove & oven, A/C & artificial turf. Bi-folding doors open to large covered patio off the living room & kitchen area + open second patio. Bright, airy, open concept design w/large windows, skylight & world-class finishes. Double-sided fireplace in master, huge shower & stand-alone tub in ensuite, nice size deck off master, laundry on upper level. 3 exterior doors for easy access. Gardens, lounge areas, BBQ area, balconies w/MOUNTAIN VIEWS & sun exposure throughout the day

KEY INFORMATION

MLS® R2925537

Residential Detached

Upper Deer Lake

4 Bedrooms

4 Bathrooms

3,669 SF

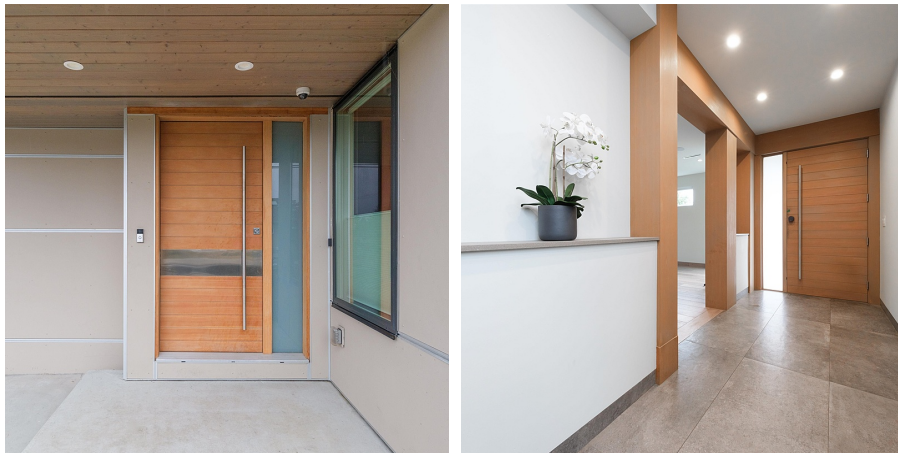
5,450 SF Lot

FEATURES

Year Built: 2016

Views: Mountain Views

Listed By: Sutton Group-West Coast Realty



rennie