

# 103 4408 Cambie Street, Vancouver

\$559,990



First time homebuyers and investors, this one is for you! Welcome to Parc Elise, a parkside 6 storey condo located adjacent to Queen Elizabeth Park and right on the Cambie Corridor. It's just a 7 min walk to the skytrain station & the #15 Olympic Village/#33 UBC bus are a few steps away. This is an opportunity to own a prestigious westside address for under \$600,000 with an unmatched location that offers convenience and tranquility. This cozy studio comes with high-end appliances, air-cooling, its own west-facing patio with direct access to the street, access to the rooftop patio that offers jaw-dropping views, 1 parking & 1 locker. Walk to nearby amenities like the Hillcrest Centre or a plethora of eateries both on Main St and along Cambie. This home is absolutely a walker's paradise!

## KEY INFORMATION

MLS® R2925771

Residential Attached

Cambie

1 Bedroom

1 Bathroom

443 SF

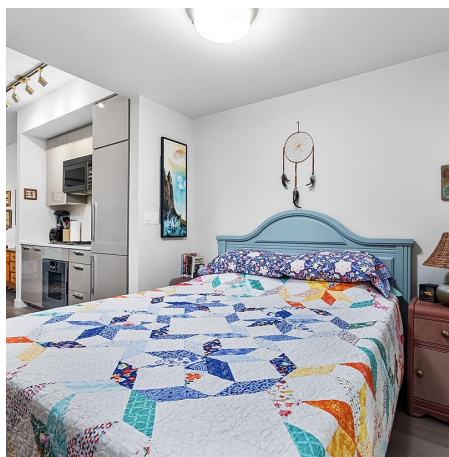
\$322.04 Maintenance Fees

## FEATURES

Year Built: 2019

Views: Trees

Listed By: Oakwyn Realty Northwest



rennie