

# 7050 Brailsford Pl, Sooke

\$889,000



OPEN HOUSE Saturday October 19th  
2:00pm-4:00pm Hosted by Mike Williams  
Sculpted into the Mountain Side this one of a kind home boasts breathtaking views of the strait of Juan de Fuca has been purposely designed with the WOW factor. Entertainers delight with a chef inspired kitchen with quartz countertops, birch millwork, walk-in pantry, gas range, and a massive island for large family gatherings. An open concept, entertainment sized dining and living room with a cozy fireplace that opens to a large sundeck with sweeping views brings the outdoors in all year around. This 4 bedroom has one bed in the lower level self contained in-law suite offers flexibility w/rental income or extended family rec room/wet bar. The upper level leads you to the primary bedroom with stunning ocean views, a walk-in closet and spa-like 5-piece ensuite. The neutral, bright and very warm design scheme is sure to impress the most discerned buyer. Fully landscaped with irrigation, exterior hot water and a gas BBQ hook-up on your deck including all the extras! \$899,000 plus GST. (id:56120)



## KEY INFORMATION

MLS® 976276

Residential Attached

John Muir

4 Bedrooms

4 Bathrooms

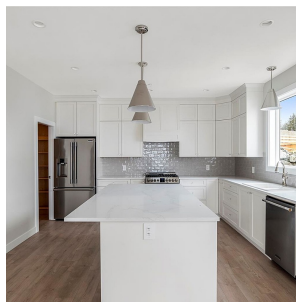
2,762 SF

2,626 SF Lot

## FEATURES

Year Built: 2024

Listed By: Pemberton Holmes - Sooke



rennie