

3910 Wilkinson Rd, Saanich

\$1,400,000



Located in the South Valley (quiet end of Wilkinson) this sweet retreat is move in ready! Offering lots of natural light & updates. The modern kitchen has stainless appliances, gas stove and flows seamlessly to a covered deck with gas BBQ coupling and seating area for up to eight people – perfect area for relaxing. The standalone double garage/workshop has a 327 sq. ft. office above it – a great work from home option or easily convert to a bachelor suite. The terraced 19,228 sq. ft. lot has fruit trees, a private patio with hot tub, good parking and the potential to build your dream home at the top the property and a 3rd home in front of existing (buyer to verify if important). The A1- Rural zoning permits “Small Scale Multi-Unit Housing” (townhomes). As you can see there are lots of options and upside for this lovely property! Viewings easily arranged by appointment, please don’t walk the property without one. (id:56120)

KEY INFORMATION

MLS® 975336

Residential Detached

Strawberry Vale

2 Bedrooms

3 Bathrooms

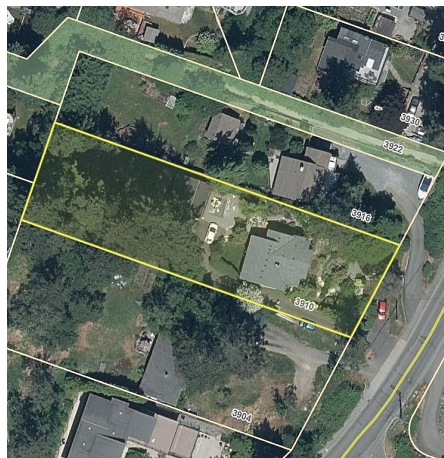
2,525 SF

19,228 SF Lot

FEATURES

Year Built: 1956

Listed By: eXp Realty



rennie