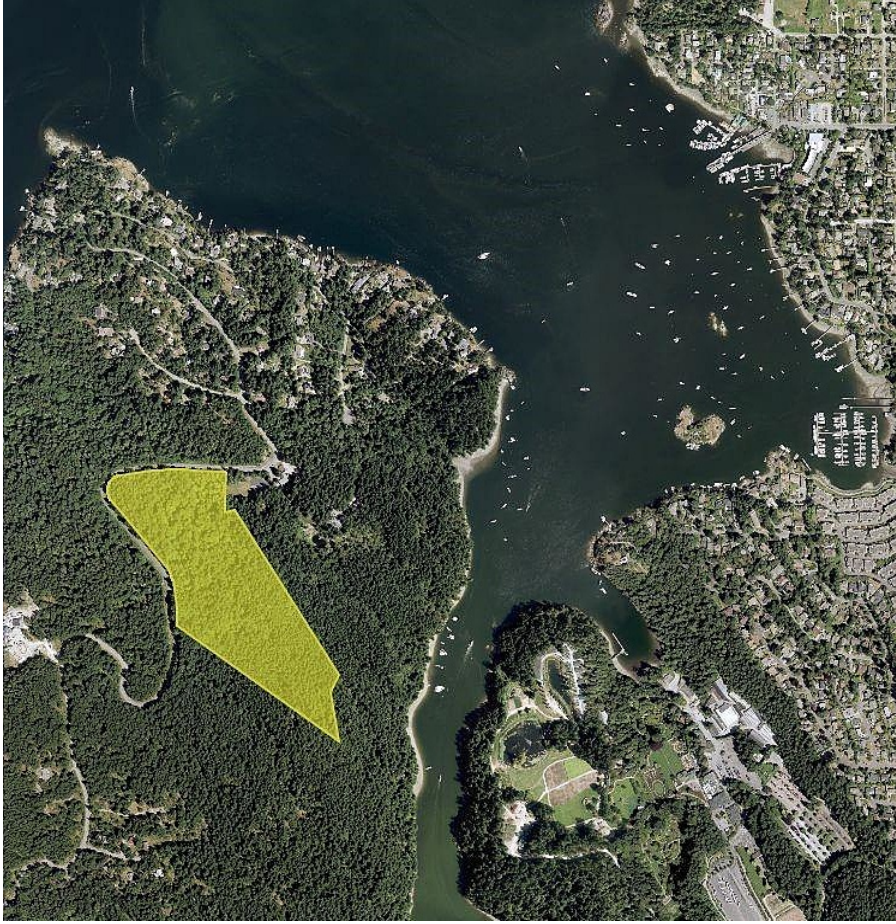


Lot 4 Willis Point Rd, Central Saanich

\$2,700,000



30.40 acres of rare non-ALR Saanich Peninsula land 20 min from Victoria bordering parkland with ocean views of Tod Inlet, Brentwood Bay, and Butchart gardens. Located in Central Saanich; a semi-rural community of hobby/working farms & vineyards with Canada's most temperate climate. Secondary suites & accessory buildings allowed, with multiple road/approach possibilities available, as well as hydro & cable on Willis Point Road lot line. Well drilled & approved for septic. This represents a last of its kind opportunity in South BC; likely never available again in present untouched, pristine state. Zoned RC with extremely low taxes and flexible opportunities for building & development on land with significant timber volumes in prime growing area for additional value every year. This lot can be purchased in conjunction with adjacent MLS# 976267. View the lots together at MLS# 973225 (id:56120)

KEY INFORMATION

MLS® 976265

Land Only

Willis Point

0 Bedrooms

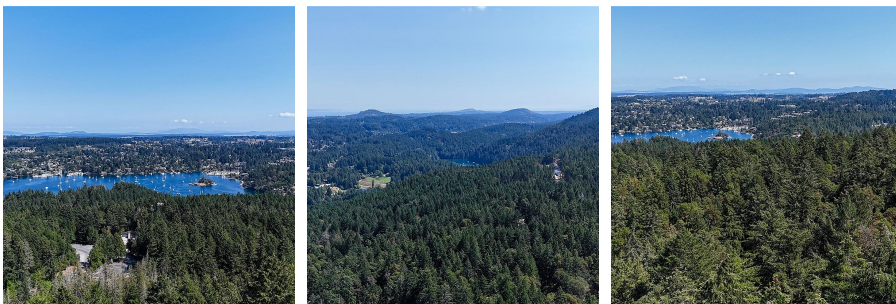
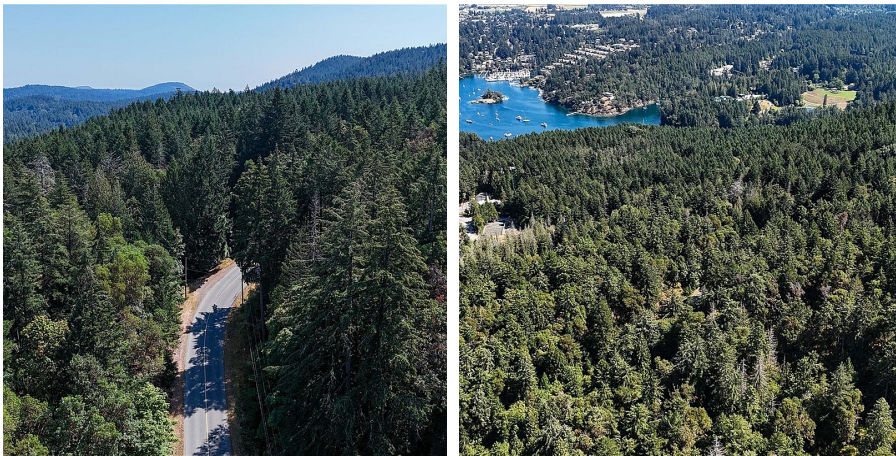
0 Bathrooms

0 SF

1,324,226 SF Lot

FEATURES

Listed By: Sotheby's International Realty Canada



rennie