

40 758 Riverside Drive, Port Coquitlam

\$1,199,000



Riverlane Estates in Riverwood. Ready to move in. The one you've been waiting for! The only 3 level, corner unit overlooking the Blakeburn Lagoon. Enjoy 2180 square feet of peace and tranquility in this spectacular setting. This well built and well kept townhome comes to market for the first time and is move in ready. Ample space for a family with 3 large bedrooms, 4 bathrooms and 2 options for a master suite. The main level offers a family room, 3 sided fireplace, eating area off the kitchen and full sized living and dining area plus rec room on the top level. Double car garage, loads of closets and extra storage in the crawl space. All located just 2 blocks to Blakeburn Elementary, Terry Fox High and minutes to shopping, Costco, walking trails, golfing and more. OPEN HOUSE SAT DEC 7 2-4

KEY INFORMATION

MLS® R2927127

Residential Attached

Riverwood

3 Bedrooms

4 Bathrooms

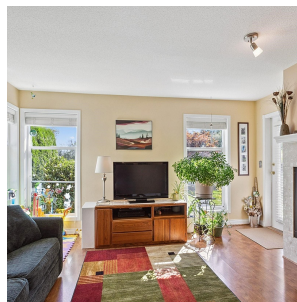
2,180 SF

FEATURES

Year Built: 1995

Views: Overlooking Blakeburn Lagoon

Listed By: RE/MAX Select Properties



rennie