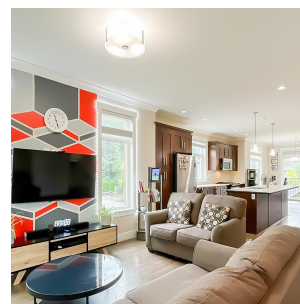
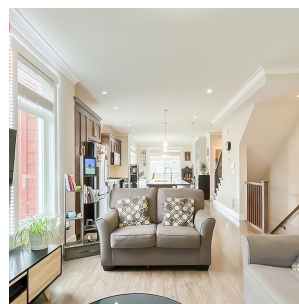
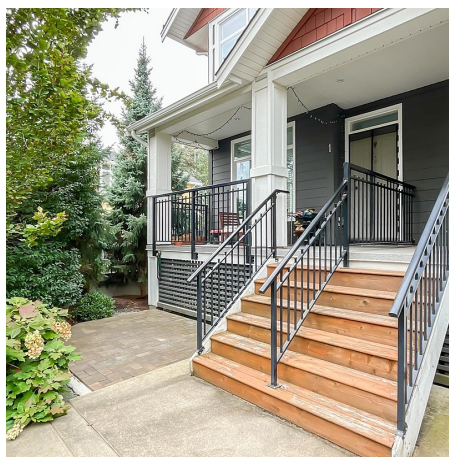


1 11461 236 Street, Maple Ridge

\$849,000



Welcome home to this bright and spacious end unit 3 bedroom and 2.5 bathroom townhome with direct access to 236 Street. At over 1500 sqft, this townhome offers extra high ceilings on the main floor, south/east/west exposures for year-round sunshine, stainless steel appliances, gas stove, and a 2 car(tandem) garage with ample street parking. Located in the heart of Cottonwood, the Two Birds Townhomes complex is located conveniently near recreational activities, hiking, and biking, and just a short drive away from all amenities in downtown Maple Ridge. Catchment schools are Alexander Robinson Elementary and Garibaldi Secondary. The West Coast Express station (Port Haney) is 5 minutes drive away and 55 minutes to Vancouver Waterfront Station.

KEY INFORMATION

MLS® R2927259

Residential Attached

Cottonwood

3 Bedrooms

3 Bathrooms

1,570 SF

FEATURES

Year Built: 2014

Listed By: 1NE Collective Realty Inc.

rennie