

39539 Vye Road, Abbotsford

\$4,699,000



6 BEDROOM HOUSE, SHOP & MULTIPLE BARNs ON 49+ ACRES! This sprawling rancher features 4 bdrms up (plus 2 down), office, 3 bathrooms, and a roomy and bright kitchen with soft-close cabinets. Large family room with vaulted ceilings and n/g fireplace. Tons of storage throughout the home! Primary bedroom on the main with full ensuite including walk-in bath. Paved circular driveway, manicured lawns, mature landscaping, and a large oval patio perfect for entertaining. HUGE 4-bay shop measuring 98' x 39' with 12' overhead doors, an 89' x 148' drive-thru barn, and 85' x 89' hip roof barn w/ hay loft. There is also a 4-bay machine shed, bunker, and 97' x 60' barn. Land is flat and clear of watercourses.

KEY INFORMATION

MLS® R2926756

Residential Detached

Sumas Prairie

6 Bedrooms

3 Bathrooms

4,710 SF

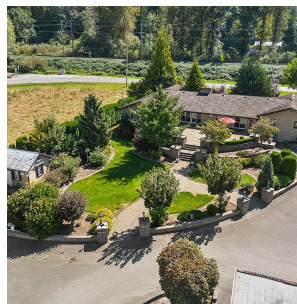
2,148,814 SF Lot

FEATURES

Year Built: 1978

Views: Mountain and Pasture

Listed By: B.C. Farm & Ranch Realty Corp.



rennie