

6455 Bryn Rd, Central Saanich

\$3,100,000



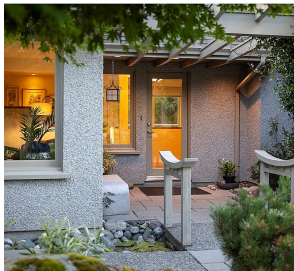
This magical country estate is sited on a sunny, private & quiet 5 acre property in the sought-after Oldfield Valley area, just mins from Elk Lake & 20 mins from downtown Victoria! Cherished & meticulously cared for by the original owner, 'Whisperhill Farm' offers a very special lifestyle w/ lots of wonderful options & amenities. The main residence features an open concept design w/ newly refinished HW flrs, lovely main level Primary suite, 2 additional bedrms, bth/laundry & access to the spectacular central courtyard area w/ multiple sitting areas, circular lawn & delightful artist's studio! Downstairs, you'll find a fully self-contained guest area & an incredible workshop perfect for woodworking pros. A separate legal 2 bedrm cottage, & several other outbuildings are privately sited away from the main home, & the certified organic farm incl. plentiful blueberries, wine grapes, extensive orchard, vegetable garden, green house, chicken coop & so much more! An incredibly special offering! (id:56120)

KEY INFORMATION

MLS® 976121
Residential Detached
Oldfield
7 Bedrooms
4 Bathrooms
5,397 SF
219,978 SF Lot

FEATURES

Year Built: 2002
Listed By: Sotheby's International Realty Canada



rennie