

1872 Ventura Way, Saanich

\$1,249,000



Listing Price Below Assessed Value! This home is nestled on a quiet cul-de-sac in Gordon Head, boasting an oversized lot of over 11,000 sq. ft. The main level offers 3 bedrooms and an open-concept kitchen, perfect for starting your day in comfort. Step outside to enjoy a fully fenced yard and a spacious deck, ideal for family gatherings and outdoor relaxation. Bonus: A rare 4-bedroom suite with a separate entrance and laundry offers an excellent opportunity for rental income or multi-generational living. This property presents incredible potential for investors, first-time buyers entering the market, or those seeking an affordable home with renovation possibilities. Don't miss out on this unique gem! (id:56120)

KEY INFORMATION

MLS® 976600

Residential Detached

Lambrick Park

7 Bedrooms

2 Bathrooms

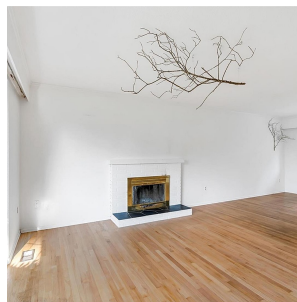
2,496 SF

11,340 SF Lot

FEATURES

Year Built: 1965

Listed By: NAI Commercial (Victoria) Inc.



rennie