

2066 Sw Marine Drive, Vancouver

\$3,950,000



Welcome to the EXCLUSIVE Residences at WILMAR. Stuart Howard Architects Designed and Interiors by Cecconi Simone, this BRAND NEW SHOW HOME is move-in ready. Over 3800 SF of generous modern interiors beautifully intertwined w/traditional Tudor Revival. This stately home offers 3 BEDS w/ensuites, office w/ fireside deck, wok kitchen w/backyard gas BBQ & rec room perfect for movie & game nights! Primary w/sunny balcony, opulent ensuite/walk in closet & a hidden flex room. Wolf/SubZero appls, luxurious kitchen layout, elevator, smart home tech w/AC, lighting, sound & security, herringbone HW floors, elegant wall paneling, classic millwork & 2 car att garage. Prominent Southlands location close to top schools, UBC, parks/golf/shopping/dining, 10 min YVR & 20 to DT. OPEN HOUSE SUN, NOV 3, 2PM-4PM

KEY INFORMATION

MLS® R2927731

Residential Detached

Southlands

3 Bedrooms

5 Bathrooms

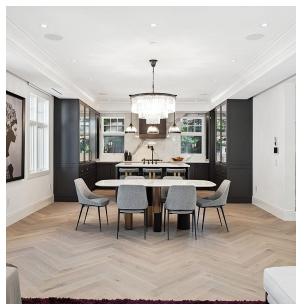
3,834 SF

5,596 SF Lot

FEATURES

Year Built: 2024

Listed By: rennie & associates realty ltd.



Salina Kai PREC*
604.773.7013
skai@rennie.com
rennie.com/salinakai



Danny Chow PREC*
604.765.2469
dchow@rennie.com
rennie.com/dannychow

rennie