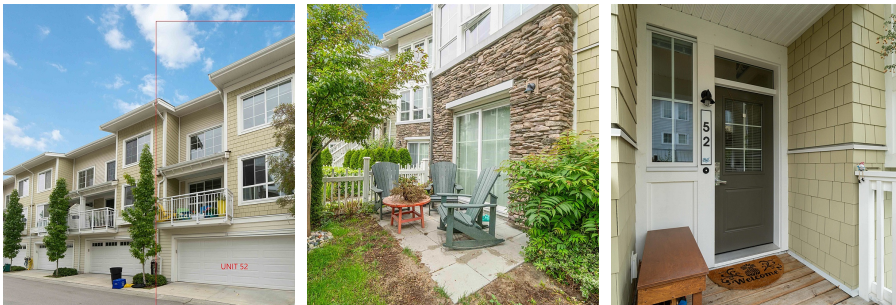


52 5551 Admiral Way, Delta

\$1,380,000



Enjoy living in the seaside inspired masterplanned community of Hampton Cove at Polygon's Beaufort Landing. Corner unit has nearly 2,000 sqft of open living space near pathway walking distance to clubhouse. Smart home system can save 30%-40% electricity consumption, overheight ceilings, laminate wood flooring and a deck. This chef's kitchen features a large central island perfect for entertaining, custom wood cabinetry, engineered stone countertops, and gourmet integrated appliances. The ensuite boasts a luxurious soaker tub and shower. Downstairs, enjoy the convenience of a double car garage with ample storage. The master bedroom walk in closet has been upgraded. Clubhouse includes exercise room, guest suite, playground, outdoor pool. Neilson Grove Elementary | Delta Secondary catchment.

KEY INFORMATION

MLS® R2927656

Residential Attached

Neilsen Grove

4 Bedrooms

4 Bathrooms

1,981 SF

FEATURES

Year Built: 2019

Listed By: Royal Pacific Realty Corp.

rennie