

706 9623 Manchester Drive, Burnaby

\$658,000



An incredible opportunity to own this well-maintained 2BR, 2bath corner unit in Strathmore Towers in the core of popular Lougheed Town Centre! This unit offers a panoramic view of a beautifully landscaped green space. South-western facing gives plenty of natural light, spacious living and a charming breakfast nook that overlooks the garden, allowing in the morning sunshine. Qualified Upgrades, kitchen cabinet, backsplash, quartz countertop, and ceramic floors. The primary bedroom is spacious and features a large mirrored closet. Rentals Allowed! Quiet community, walking distance to Lougheed Skytrain Station, Lougheed Mall, and H-mart. 15 minute drive to SFU and many restaurants nearby. Quick access to HWY 1

KEY INFORMATION

MLS® R2927679

Residential Attached

Cariboo

2 Bedrooms

2 Bathrooms

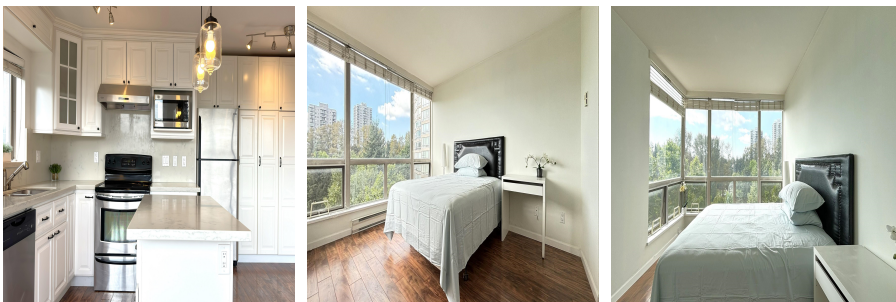
974 SF

\$416.29 Maintenance Fees

FEATURES

Year Built: 1994

Listed By: Sutton Group Seafair Realty



rennie