

503 629 Speed Ave, Victoria

\$319,000



Welcome to Tresah, a distinguished collection of contemporary condominiums situated in the bustling heart of Victoria's Midtown. This lively and dynamic neighborhood is adjacent to the Galloping Goose Trail and Gorge Waterway, and just minutes away from some of the city's premier parks and the downtown core. Tresah East is a six-story, wood-framed building comprising 68 residences. Each unit boasts thoughtful interior design and high-end finishes, including 8'11" ceilings, wide-plank oak flooring, quartz countertops and backsplashes in the kitchens and bathrooms, a stainless steel appliance package and in-suite laundry. Suite 611 is a south-facing top floor studio with floor to ceiling windows. Developed by the renowned local firm Mike Geric Construction, Tresah provides secure bike parking, access to two MODO Car Share electric vehicles, and is ideally located near transit, shopping, and dining options. Ask us about our promotions! **NEW! UNDERGROUND PARKING AVAILABLE FOR RENT.** (id:56120)



KEY INFORMATION

MLS® 976679

Residential Attached

Burnside

0 Bedrooms

1 Bathroom

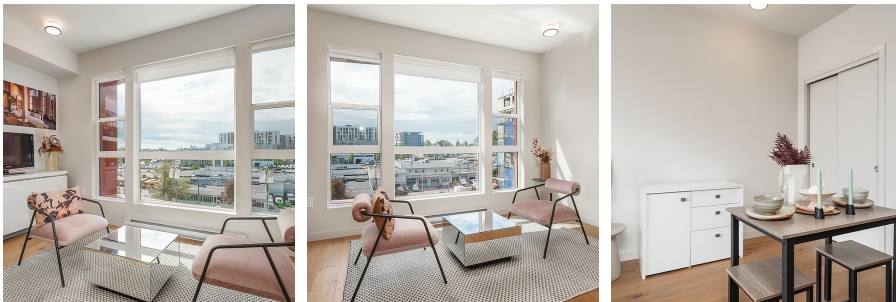
390 SF

390 SF Lot

FEATURES

Year Built: 2024

Listed By: The Agency



rennie