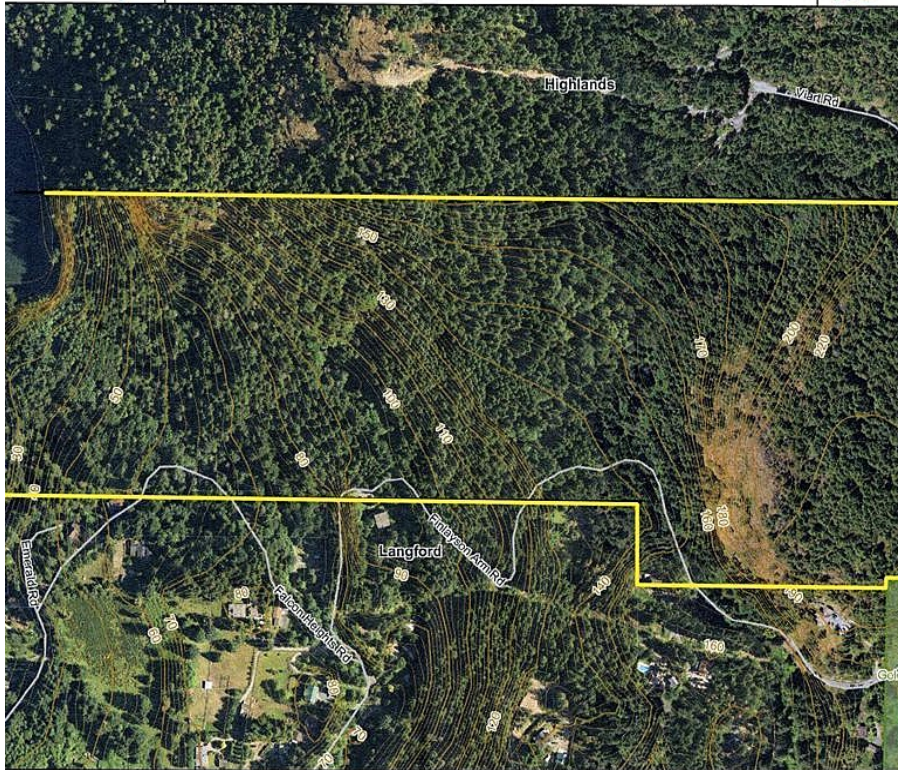


# 1028 Finlayson Arm Rd, Langford

\$3,400,000

CAPITAL REGIONAL DISTRICT maps

S1/2 S.73 Highlands 2m contours 1:4000



Map data is static output from the Capital Regional District's Internet reference only. Data layers that appear on this map may or may not be current. THIS MAP IS NOT TO BE USED FOR

This 101acre is the finest, most unique property available in Greater Victoria. Located in Langford, one of the fastest growing municipalities in B.C. Over 1100 ft of sandy ocean front beach on Finlayson Arm Inlet. This could be the view from your new home. Zoned for one house or duplex up to 10000 sq ft. This might include a needed inlaw suite. As the property is zoned for agriculture, a small vineyard might be an idea. The property fronts on 3 roads, includes Mineral Rights and a Timber cruise value of approx. \$4000000. Located 10 minutes from Costco, close to shopping, hospitals and schools with school busing available. This property provides the best of both worlds with privacy, yet close to all amenities. The Price of this amazing property is \$3400000. (id:56120)

## KEY INFORMATION

MLS® 976461

Land Only

Western Highlands

0 Bedrooms

0 Bathrooms

0 SF

4,399,567 SF Lot

## FEATURES

Listed By: Sutton Group West Coast Realty



rennie