

1727 Lee Ave, Victoria

\$1,225,000



Welcome to 1727 Lee Avenue, priced below assessment! This 2 bedroom, 2 bathroom character home sits on a lovely quiet street in the Jubilee neighbourhood. As you walk up the front steps you will be greeted by a covered front porch perfect for the morning coffee, which leads into the home and all its original character! The large living room full of charm, with wood floors, cozy fireplace a great entertainment space and plenty of natural light throughout. There is a separate dining room which leads onto the kitchen and eating space overlooking the back yard. There are two good sized bedrooms and bathroom. Downstairs a second bathroom, laundry and room for plenty of storage. French doors from the eating area and bedroom lead onto the large deck off the back of the home overlooking the private and sunny back yard with your own gate access into Redfern Park! Walk to get your groceries, Oak Bay avenue shopping, main bus routes, a truly great neighbourhood. (id:56120)

KEY INFORMATION

MLS® 976789

Residential Detached

Jubilee

2 Bedrooms

2 Bathrooms

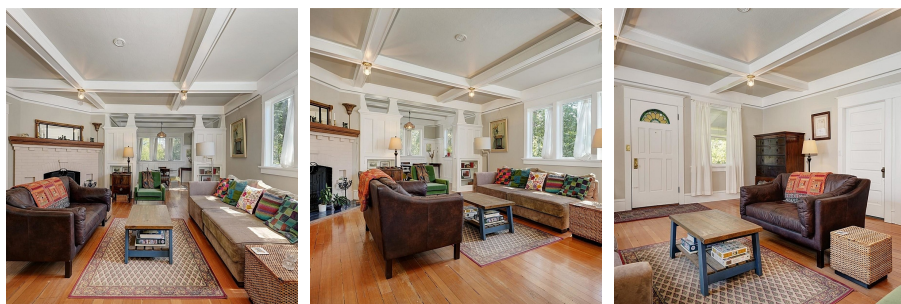
2,316 SF

5,300 SF Lot

FEATURES

Year Built: 1913

Listed By: Newport Realty Ltd.



rennie