

# 216 4809 Spearhead Drive, Whistler

\$998,000



Discover the perfect blend of adventure and relaxation with this stunning ground-level 1-bedroom, 1-bathroom gem located on Blackcomb Mountain. Just steps from the ski slopes, you'll enjoy unparalleled access to world-class skiing and snowboarding right outside your door. This inviting space is not just a home; it's a sanctuary. Unwind in the outdoor pool and hot tub or indulge in the sauna after a day of exploring. With the vibrant village just moments away, you'll have dining, shopping, and entertainment at your fingertips. Nightly rentals are allowed, making this property an excellent investment opportunity. Whether you're seeking a home away from home or a smart investment, this is your chance to embrace the mountain lifestyle. Don't miss out - schedule your viewing today!

## KEY INFORMATION

MLS® R2928283

Residential Attached

Benchlands

1 Bedroom

1 Bathroom

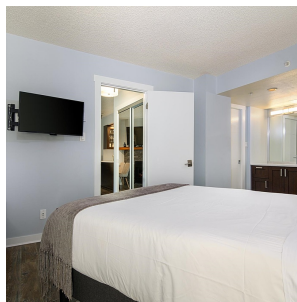
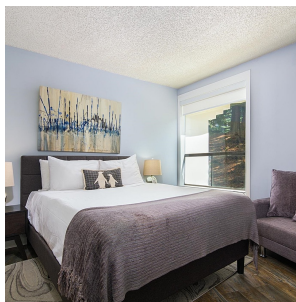
541 SF

\$421.00 Maintenance Fees

## FEATURES

Year Built: 1990

Listed By: rennie & associates realty ltd.



**Martina Cartner**  
604.902.2869  
mcartner@rennie.com  
rennie.com/martinacartner



**Steve Cartner** PREC\*  
604.935.2199  
scartner@rennie.com  
rennie.com/stevecartner

**rennie**