

7700 Pemberton Meadows Road, Pemberton

\$3,895,000



Explore this private piece of heaven only five minutes from downtown. An exceptional property that boasts a sprawling 17 plus acres of pure, organic rich soil, abundant sunshine throughout the year & breathtaking mountain vistas. It is a rare & one-of-a-kind opportunity seldom found on ALR land. It includes a lovely post & beam home, an income producing duplex, three garages, a mechanical shop & farm out-buildings. Potential for growth is limitless with possibilities such as clearing trees for more farmland, adding an equestrian facility, a new agritourism venture or a farm stand set on the Meadows road frontage. With personal touches, this rare gem can become an even more remarkable setting, offering boundless opportunities for a fulfilling & rewarding lifestyle....

KEY INFORMATION

MLS® R2928460

Residential Detached

Pemberton Meadows

3 Bedrooms

4 Bathrooms

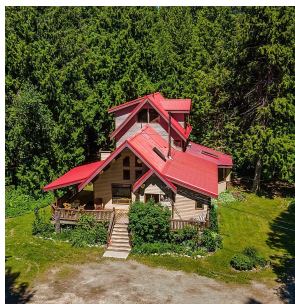
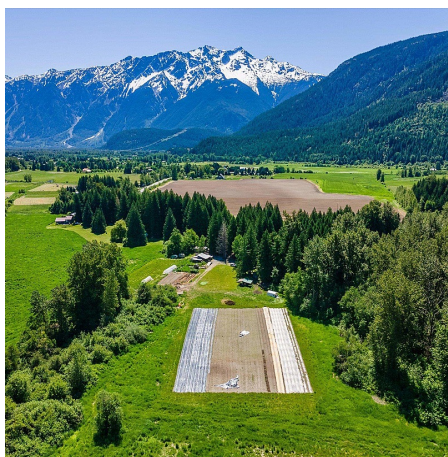
3,007 SF

FEATURES

Year Built: 1988

Views: MT. CURRIE

Listed By: Royal LePage Sussex



rennie