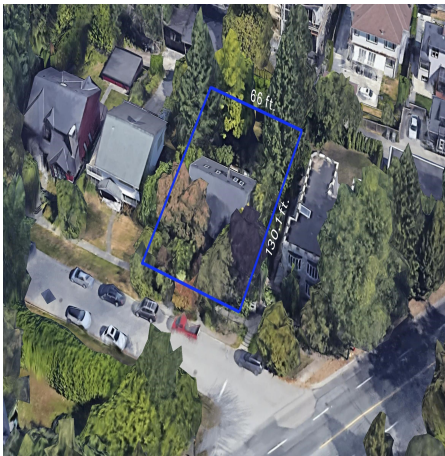


2115 W 34th Avenue, Vancouver

\$4,180,000



Ideally suited for a Developer, this large double-wide (66ft by 130ft) offers the the opportunity to build under the Secured Rental Program with the Potential for a 2.4 FSR if Purchasing the neighbouring property currently listed for sale, see MLS #R2846098 (2111 West 34th) - buyer advised to confirm w/CoV. A Very livable 1920's home bordering on Kerrisdale and Quilchena features 3 Levels with Views to the North Shore Mountains and a 2 bd basement suite. Close to Point Grey Academy, Prince of Wales Secondary, Quilchena Park and Elementary, Arbutus Greenway, Transit and the shopping district of Kerrisdale.

KEY INFORMATION

MLS® R2928765

Residential Detached

Quilchena

5 Bedrooms

3 Bathrooms

3,275 SF

8,580 SF Lot

FEATURES

Year Built: 1921

Views: North Shore Mountain

Listed By: Engel & Volkers Vancouver