

116 67 Miner Street, New Westminster

\$599,000



This Large 1988 Model 1005 sq ft. 1 Bed and Den and 2 Bath Apartment is like a house, has Den (Big enough for a bedroom) & a Pantry (Big Enough for an Office), separate storage locker and parking stall, Amenity Room, Guest Suite. View the Beautiful Garden from the Balcony, Fraserview Park has those traits that make New Westminster so desirable. It's heritage, deep-rooted culture, & the convenience of being near to a major city centre, while still keeping the intimacy and tranquility of a small town with Queen's Park and Royal City Mall nearby. Maintenance fee \$581.38 per month, Pets Allowed With Restrictions,(1 dog & 1 cat, 2 in total), Come and Have a Look! Open House Sun. Oct.20, 2024 from 2-4 PM.

KEY INFORMATION

MLS® R2928664

Residential Attached

Fraserview

1 Bedroom

2 Bathrooms

1,005 SF

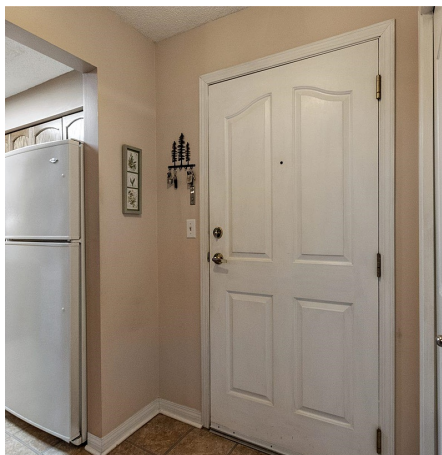
\$581.38 Maintenance Fees

FEATURES

Year Built: 1989

Views: VIEW OF Ravine

Listed By: Royal LePage West Real Estate Services



rennie