

2402 258 Nelson's Court, New Westminster

\$688,000



Stunning Jr.2 bed condo located on the 24th floor (Only 6 units on this floor) of "The Columbia" in the vibrant Brewery District by Wesgroup. This 706 sqft home boasts partial water and mountain views, close to 300 SQFT Terrace space, open-concept living, and modern finishes. Enjoy a short walk to Sapperton Skytrain, Save-on-Foods, Royal Columbian Hospital, and restaurants. Enjoy a huge 10,000 sqft clubhouse with a full gym, tennis court, and many others. Perfect for those seeking urban living with a blend of comfort and style.

KEY INFORMATION

MLS® R2928930

Residential Attached

Sapperton

1 Bedroom

1 Bathroom

706 SF

\$435.90 Maintenance Fees

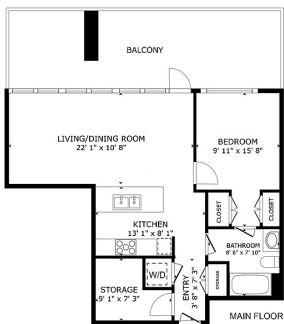
FEATURES

Year Built: 2020

Views: Partial water view & mountain

Listed By: Sutton Group - 1st West Realty

2402-258 Nelson's Court, New Westminster



GROSS INTERNAL AREA: MAIN FLOOR: 708 SQ.FT. EXCLUDED AREA: BALCONY: 301 SQ.FT.

TOTAL: 708 SQ.FT.

This floor plan illustration is for reference only and is not a legally certified document. Measurements are approximate and may not be to scale. See the advertisement for more details.



rennie